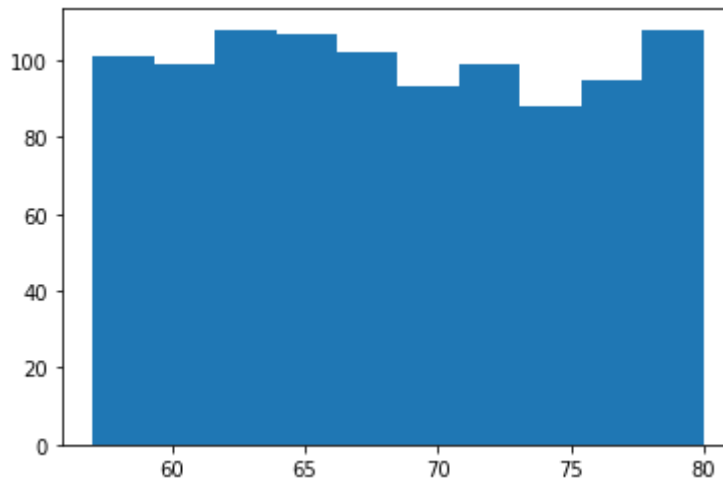


```
In [1]: %matplotlib inline
import numpy as np
import matplotlib.pyplot as plt
np.random.seed(0)
[l, h] = [57, 80]
heights_pop = np.random.rand(1000) * (h-l) + l
```

What does the population look like?

```
In [2]: plt.hist(heights_pop)
print('num = %d' % len(heights_pop))
print('pop. mean = %f' % np.mean(heights_pop))
```

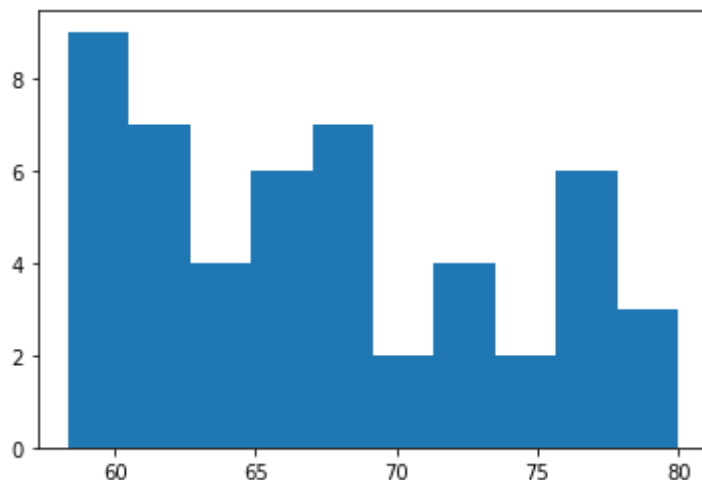
```
num = 1000
pop. mean = 68.406195
```



Function to sample from the population

```
In [3]: def get_sample(sample_size):  
        return np.random.choice(heights_pop, size=sample_size)  
sample = get_sample(50)  
plt.hist(sample)  
print(np.mean(sample))
```

67.43157784296102



```
In [4]: # Let's sample 50 samples 10 times and compute xbar each time  
for i in range(10):  
    x_bar = np.mean(get_sample(50))  
    print(x_bar)
```

66.86283260046085
69.00911119776286
68.31883579798986
69.15834016258508
68.71629432728038
65.88734995542724
68.29635801900214
69.0662803320783
69.76104166212019
67.99856241695707

```
In [5]: # Let's put in a list using a list comprehension  
x_bar_list = [np.mean(get_sample(50)) for i in range(10)]  
print(x_bar_list)
```

[68.34243302901608, 68.84638278534169, 68.45573286994664, 70.235295776674
69, 68.01479838483341, 68.13080608910067, 70.07658352681901, 67.239727794
33147, 68.01507829414726, 67.75870307758584]

Function to repeat the experiment

```
In [6]: def repeat_experiment(n_repeats=10, n_samples=50):  
        return [np.mean(get_sample(n_samples))  
                for i in range(n_repeats)]  
repeat_experiment()
```

```
Out[6]: [68.72973497472702,  
        67.85903102813499,  
        67.9827025209443,  
        68.12709213076994,  
        68.11063045635566,  
        67.9841320418931,  
        68.553594322684,  
        67.6553032543313,  
        67.92745312365558,  
        69.04026924188064]
```

```
In [7]: # Let's calculate how close these estimates are to the population mean  
mu_pop = np.mean(heights_pop)  
x_bar_list = repeat_experiment(n_repeats=10, n_samples=50)  
mse = np.mean((x_bar_list - mu_pop)**2)  
print(mse)
```

```
0.6057557665959479
```

```
In [8]: # What if we use a smaller number of samples?  
mu_pop = np.mean(heights_pop)  
x_bar_list = repeat_experiment(n_repeats=10, n_samples=10)  
mse = np.mean((x_bar_list - mu_pop)**2)  
print(mse)
```

```
8.089564954989061
```

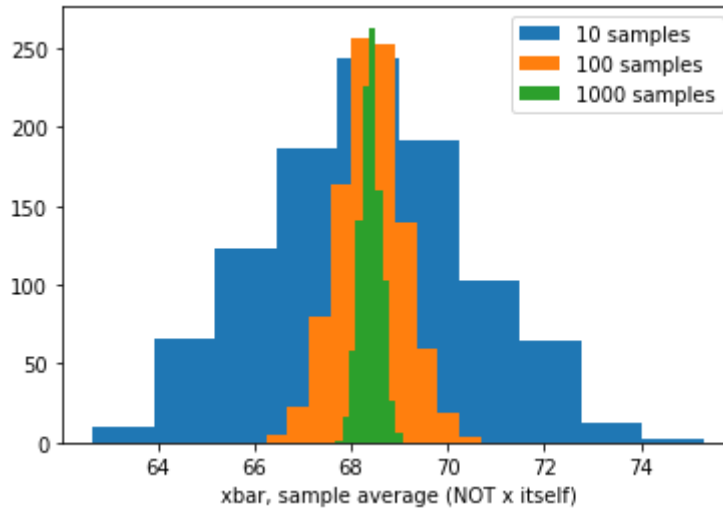
Visualizing the Central Limit Theorem

```
In [9]: # What if we plot the distribution of repeating this experiment?
x_bar_list = repeat_experiment(n_repeats=1000, n_samples=10)
_ = plt.hist(x_bar_list, label='10 samples')

x_bar_list = repeat_experiment(n_repeats=1000, n_samples=100)
_ = plt.hist(x_bar_list, label='100 samples')

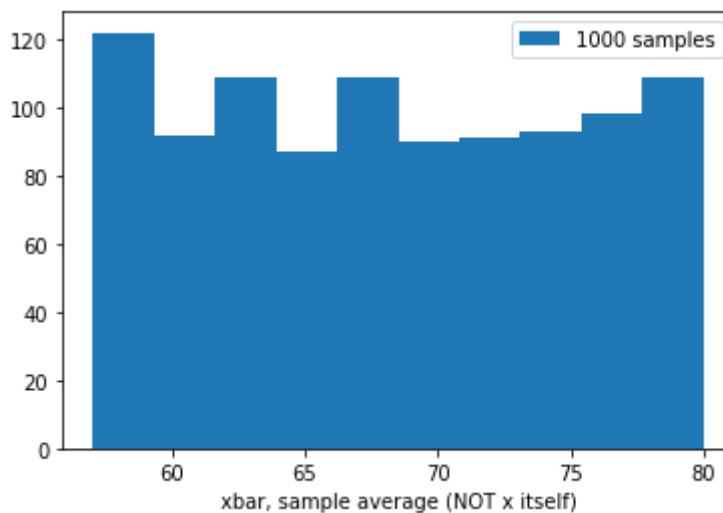
x_bar_list = repeat_experiment(n_repeats=1000, n_samples=1000)
_ = plt.hist(x_bar_list, label='1000 samples')
plt.xlabel('xbar, sample average (NOT x itself)')
plt.legend()
```

Out[9]: <matplotlib.legend.Legend at 0x114ae75c0>



```
In [10]: # What if we only have one sample per experiment?
x_bar_list = repeat_experiment(n_repeats=1000, n_samples=1)
_ = plt.hist(x_bar_list, label='1000 samples')
plt.xlabel('xbar, sample average (NOT x itself)')
plt.legend()
```

Out[10]: <matplotlib.legend.Legend at 0x114c20128>



```
In [11]: # Notice that even though the original distribution is not normal  
# the distribution of x_bar (the sample mean) is almost normal
```